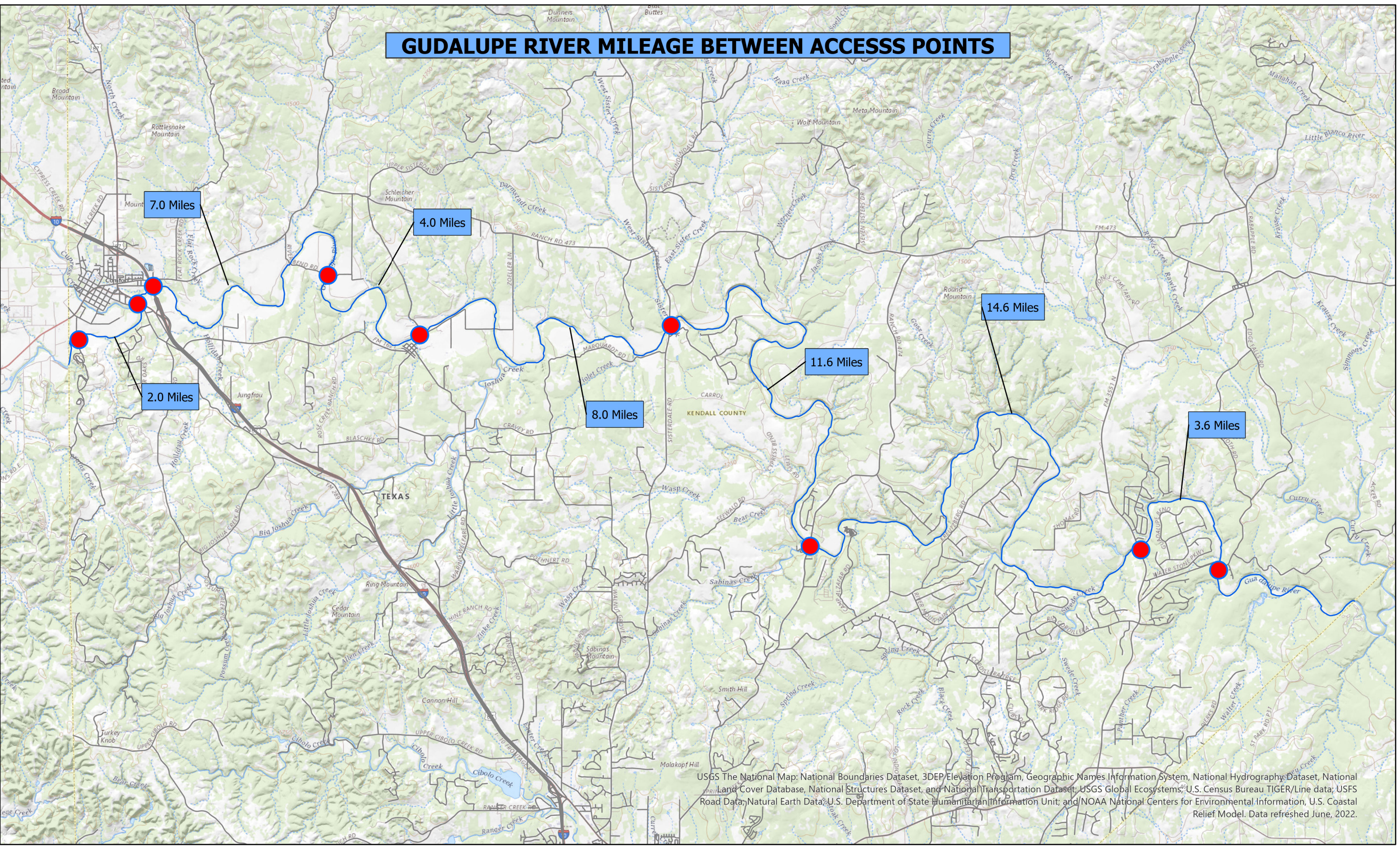
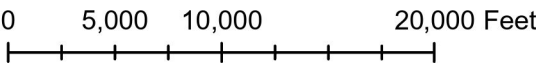


GUDALUPE RIVER MILEAGE BETWEEN ACCESS POINTS



USGS The National Map: National Boundaries Dataset, 3DEP Elevation Program, Geographic Names Information System, National Hydrography Dataset, National Land Cover Database, National Structures Dataset, and National Transportation Dataset; USGS Global Ecosystems; U.S. Census Bureau TIGER/Line data; USFS Road Data; Natural Earth Data; U.S. Department of State Humanitarian Information Unit; and NOAA National Centers for Environmental Information, U.S. Coastal Relief Model. Data refreshed June, 2022.

1 inch equals 9,000 feet
Scale: 1:108,000



This Geographical Information System Product, is provided "As Is" without warranty of any kind and Kendall County expressly disclaims all expressed and implied warranties.